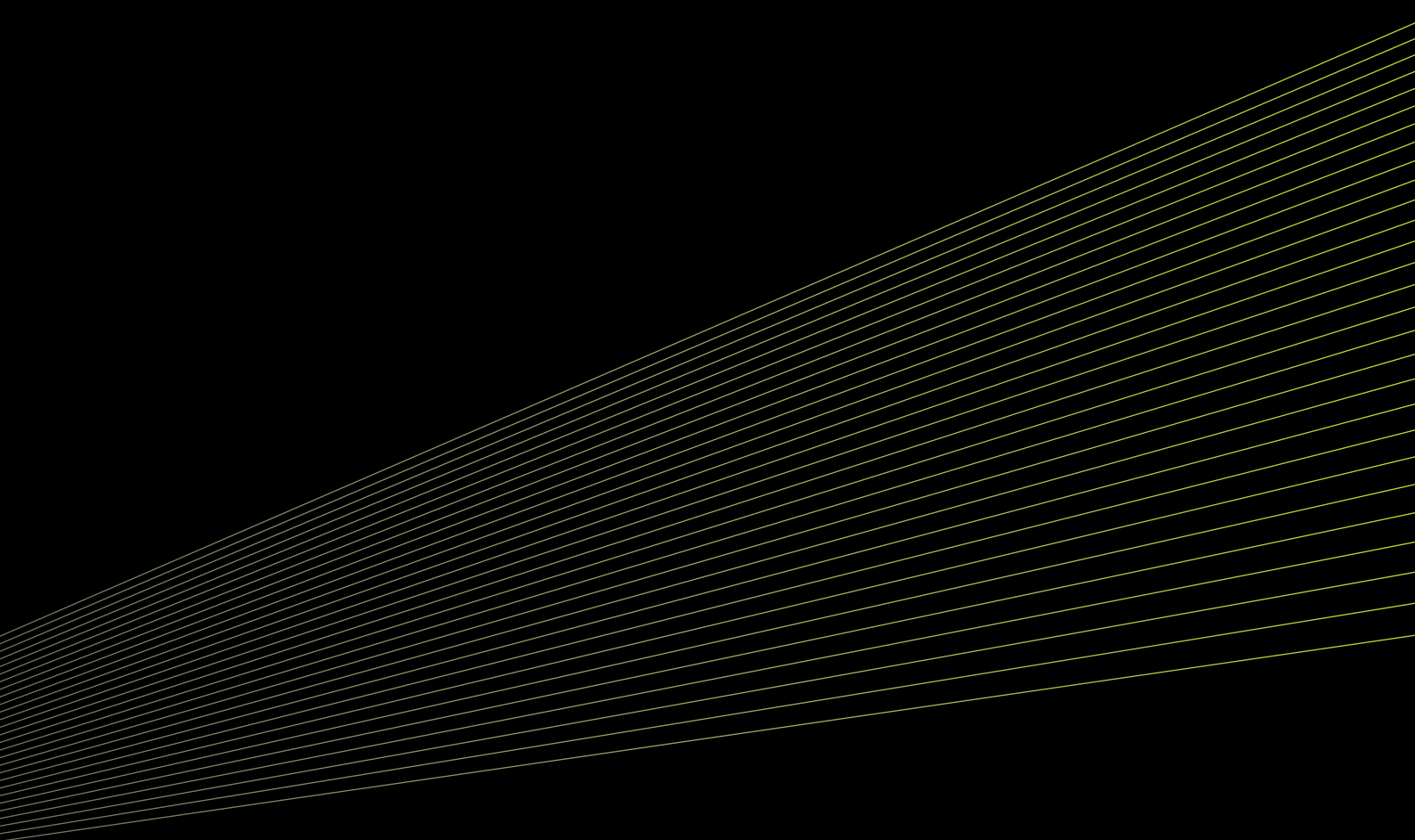
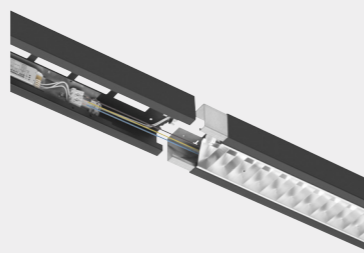
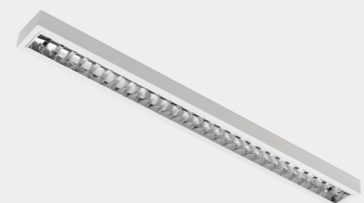
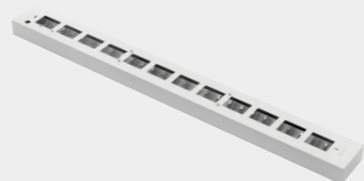
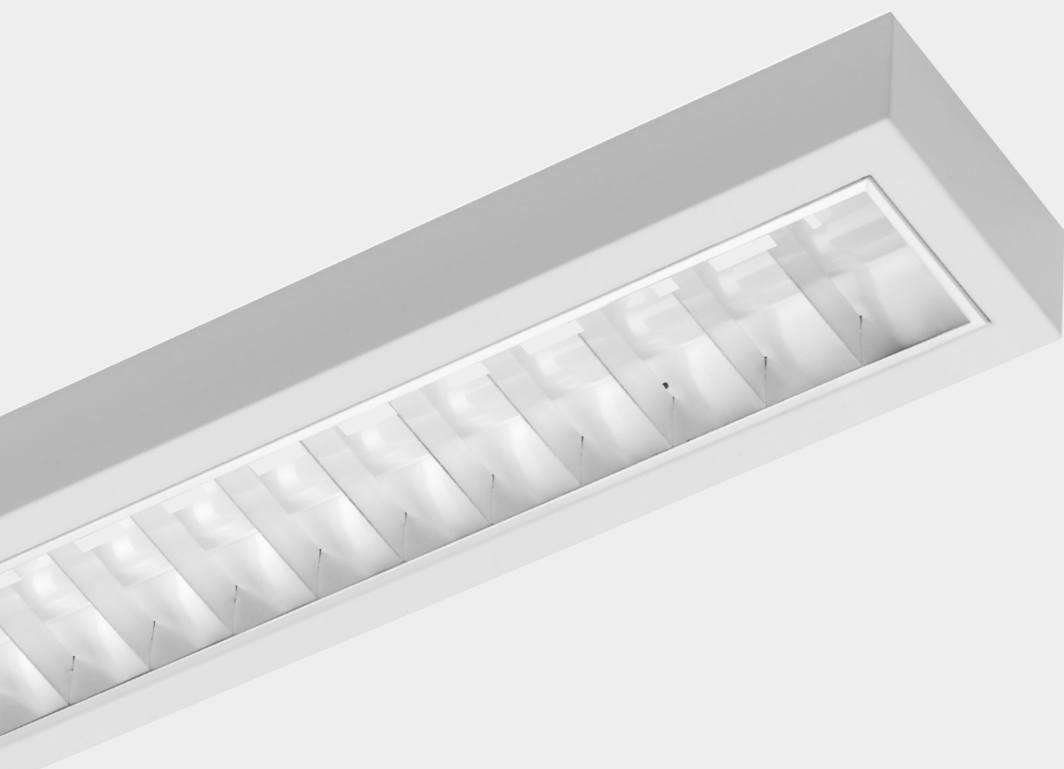


ENLIT

SELECTION 2018





TUNABLE
* WHITE *

LED

APPLICATIONS

- offices
- computer rooms
- meeting rooms
- classrooms
- banks
- CAD workplaces
- stores
- corridors
- showrooms

INSTALLATION TYPE

- SUR – mounting on solid surfaces
- SUS – suspended

LIGHT SOURCES

- T5 – linear fluorescent lamp
- LED

ELECTRICAL EQUIPMENT

- ECG – electronic control gear
- DIM 1-10V – electronic analogue dimmable control gear
- DSI – electronic digitally dimmable control gear
- DALI – electronic DALI dimmable control gear

OPTIONAL EQUIPMENT / ACCESSORIES

- lamps included in luminaire
- sensors
- fast connectors
- bottom diffuser

VALUE FOR PRICE

- 1 compact and very efficient luminaire
- 2 anodized aluminium, double parabolic louvre with high reflective aluminium (MIRO4, MIRO5) and glare prevention
- 3 last generation LED modules with high luminous efficiency
- 4 2 lighting characteristics – direct and direct/indirect
- 5 nice laser welded corners of the luminaire
- 6 different colours of housing available on request, including exclusive colour finish (e.g. matt black, grey microstructure and similar)
- 7 integration of motion/daylight sensors
- 8 product fully manufactured and assembled in Slovakia

BOXY

Lighting quality in the cleanest form

VERSIONS WITH MIRO ALUMINIUM

Very efficient, environmentally and professional solution with uncompromising lighting quality.
High level of prevention against glare. UGR<19. High optical efficiency with a total reflectivity of 95%.
Exceptional price in comparison with competitors.

Popular luminaires with puristic design are characterized by clean lines and low profile. Depending upon the specific version they offer whether direct or combination of direct and indirect luminous flux distribution. Opportunity to employ two linear fluorescent lamps inside one parabolic louvre makes it possible to reach high lumen output from very compact luminaire dimensions. By using of connecting pieces, luminaires could be mounted together into one continuous row.

QUALITY OSRAM LED TECHNOLOGY

Last generation LED modules with high luminous efficiency from renowned producer.
Available in 3000K, 4000K and 6500K. On request Tunable White 3000K-6000K.

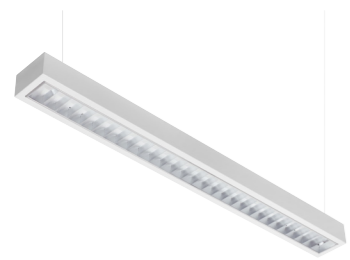
BOXY LINE VERSIONS

Individual luminaires BOXY LINE are joined together by using of sheet steel connecting pieces, inserted inside luminaire profiles. Lighting row BOXY LINE consists of the first **F** and the last **L** piece. Between first and last, through **T** pieces are inserted. Through wiring 3x1,5mm² or 5x1,5mm² for quick interconnection of single luminaires is integral part of F and T pieces.

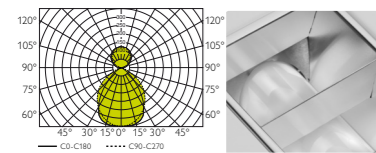


BOXY LED

DIR/INDIR



Lamp	LED
Cooling	PASSIVE
Class	I
Ingress protection	IP20
Weight	3,6-4,7 kg



BOXY LED 12 DIR/INDIR 2C, D/I=64/36



LED luminaire with direct/indirect light distribution. The balanced wide indirect radiation throws light reflected from the ceiling back to the room and in combination with downward direct lighting provides harmonic distribution of brightness within a room space. Luminaire is equipped with double parabolic louvre made of anodised aluminium, suitable for VDU workstations. Luminaire housing made of 0,6mm sheet steel, powder coated finish. BOXY LED DIR/INDIR could be optionally equipped with two independent drivers, thus enabling independent control of direct and indirect part of luminous flux distribution.

INSTALLATION TYPE

- SUS – suspended luminaire

OPTICAL SYSTEM

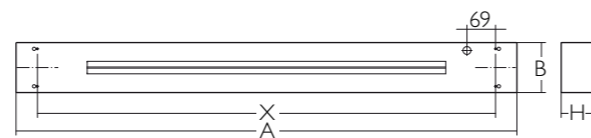
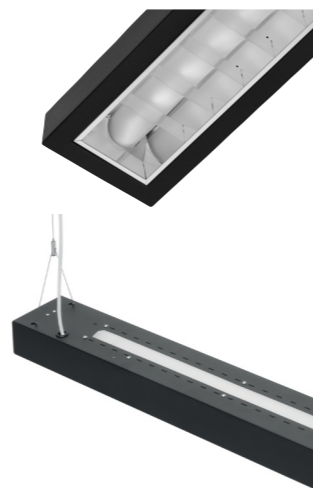
- PSL (parabolic specular louvre) – polished, anodized aluminium, double parabolic louvre with glare prevention
- PML (parabolic matt louvre) – matt, anodized aluminium, double parabolic louvre
- DO – bended opal diffuser for wide spread of indirect light designed especially for uplighting and indirect illumination

ELECTRICAL EQUIPMENT

- last generation linear LED modules fixed on two separate aluminium mounting plates
- one or two electronic LED drivers
- screwless terminal block with strain relief, max. 2,5mm²
- cable opening entry completed with cable gland, IP20
- possibility of mounting into one continuous lighting row

OPTIONAL EQUIPMENT

- wired with emergency unit (1 or 3h)
- wired with dimmable electronic control gear (DIM 1-10V, DSI, DALI)
- various colour finishing



Type*	System power (W)	Equivalent	A/X (mm)	B (mm)	H (mm)	kg
BOXY LED 12 DIR/INDIR 1C 5745lm	52	2x28W T5	1203/1100	120	75	3,6
BOXY LED 12 DIR/INDIR 2C 6310lm	58	2x54W T5	1203/1100	120	75	3,6
BOXY LED 15 DIR/INDIR 2C 8200lm	75	2x49W T5	1483/1380	120	75	4,7

*net lumen output of the luminaire by 4000K

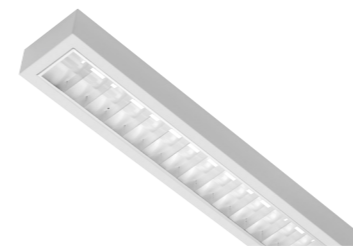
1C - one circuit DIR+INDIR

2C - two circuits, separate control of DIR and INDIR part

CODE	TYPE	SPECIFICATION					
		cct	optics	cri	control gear	colour	accessories
BE011C00LE05745	BOXY LED 12 DIR/INDIR 1C	4000K	PML	80	ECG	white	M1h
BE012C00LE06310	BOXY LED 12 DIR/INDIR 2C	3000K	PSL	90	DALI	grey	M3h
BE112C00LE08200	BOXY LED 15 DIR/INDIR 2C	6500K			DIM1-10V	black	

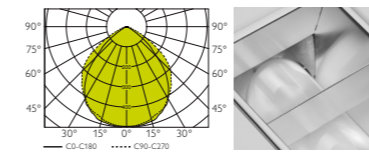
BOXY LED

range

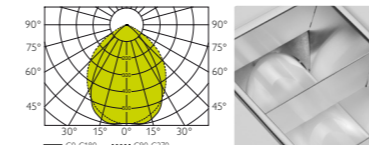


BOXY LED DIR

Lamp	LED
Cooling	PASSIVE
Class	I
Ingress protection	IP20
Weight	2-3,8 kg



BOXY LED DIR PML MIRO5



BOXY LED DIR PML HE MIRO5

DIMENSIONS:
603x120x58mm
1203x120x58mm
1483x120x58mm



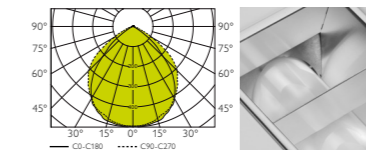
Type*	System power (W)
BOXY LED 06 DIR 1100lm	10
BOXY LED 12 DIR 2350lm	20
BOXY LED 12 DIR 4275lm	36
BOXY LED 15 DIR 2750lm	23
BOXY LED 15 DIR 5300lm	45

*net lumen output of the luminaire by 4000K

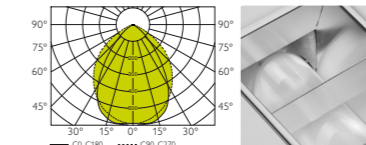


BOXY LED CORNER

Lamp	LED
Cooling	PASSIVE
Class	I
Ingress protection	IP20
Weight	2-3,8 kg



BOXY LED DIR PML MIRO5



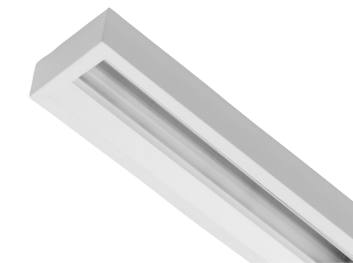
BOXY LED DIR PML HE MIRO5

DIMENSIONS:
603x143x72mm
1203x143x72mm
1483x143x72mm



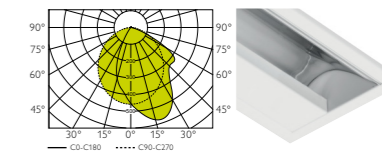
Type*	System power (W)
BOXY LED CORNER 06 DIR 1100lm	10
BOXY LED CORNER 12 DIR 2350lm	20
BOXY LED CORNER 12 DIR 4275lm	36
BOXY LED CORNER 15 DIR 2750lm	23
BOXY LED CORNER 15 DIR 5300lm	45

*net lumen output of the luminaire by 4000K



BOXY LED ASYM

Lamp	LED
Cooling	PASSIVE
Class	I
Ingress protection	IP20
Weight	1,7-3,4 kg



BOXY LED ASYM 06 1100lm



BOXY LED ASYM 12 2200lm

DIMENSIONS:
603x120x58mm
1203x120x58mm
1483x120x58mm



Type*	System power (W)
BOXY LED ASYM 06 1100lm	13
BOXY LED ASYM 12 2200lm	26
BOXY LED ASYM 15 2800lm	33

*net lumen output of the luminaire by 4000K

“The ultimate goal of lighting practice is to provide brightness in the entire visual environment which produce the most satisfactory seeing conditions”*

*Luckiesh M., Guth S. (1949). Brightnesses in visual field: whitepaper for Illuminating Engineering, p.650

Glare can be greatly reduced by having a well lit environment, with indirect lighting. Pupillary dilatation is a factor of the surrounding brightness, and the larger the pupil diameter the higher the glare dazzling, hence a brighter background will cause pupil constriction and lower glare perception.

Following the fact above, it is safe to recommend adequate background lighting in environments which are prone to glare with a high UGR. This can be achieved by having indirect illumination from ceilings, most commonly achieved by luminaires that can provide diffused light to ceilings as well as wall washing.

By typical installation distance 50 cm from the ceiling, BOXY LED DIR/INDIR could significantly help lighting designers to fulfill requirement regarding glare evaluation:

by lighting up the ceiling it's possible to lower UGR without decreasing the amount of direct lighting.

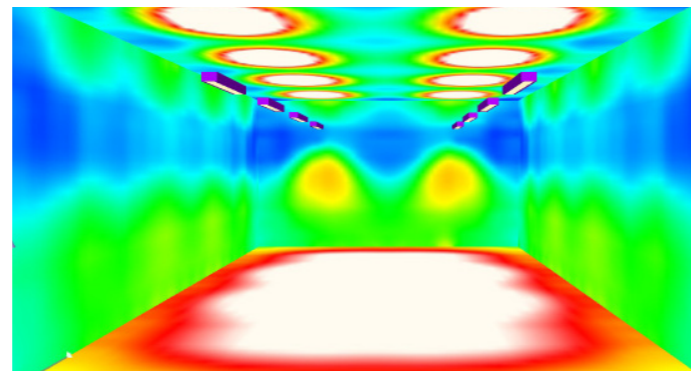
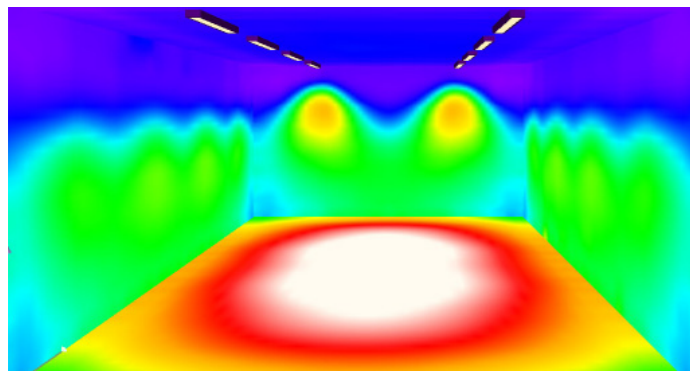
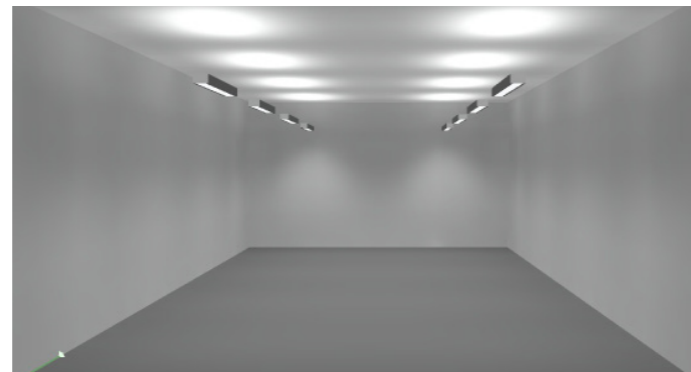
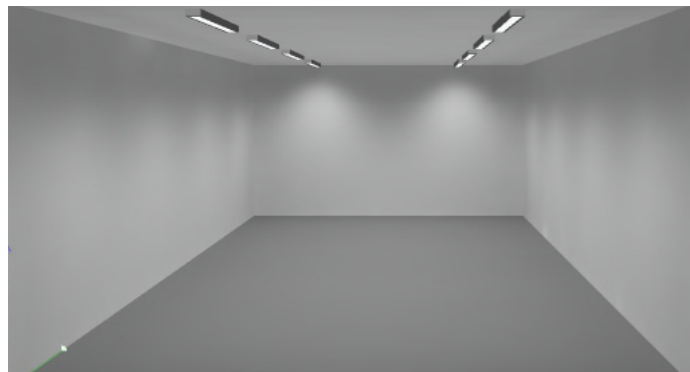
APPLICATION EXAMPLE

Setup:

- office room 5x10x2,8m
- light solution:
typical office luminaire with louver or microprismatic diffuser
- 2x4 luminaires installed
- 500lx
- UP: 0%
- UGR <20

Setup:

- office room 5x10x2,8m
- light solution:
BOXY LED DIR/INDIR
- 2x4 luminaires installed
- 500lx
- UP: 36%
- UGR <17



enlighten your world

ENLIT spol. s r. o.

Priemyselná 1497/18b
905 01 Senica
Slovakia

T +421 905 556 800
T +421 915 089 654
E info@enlit.sk

www.enlit.sk