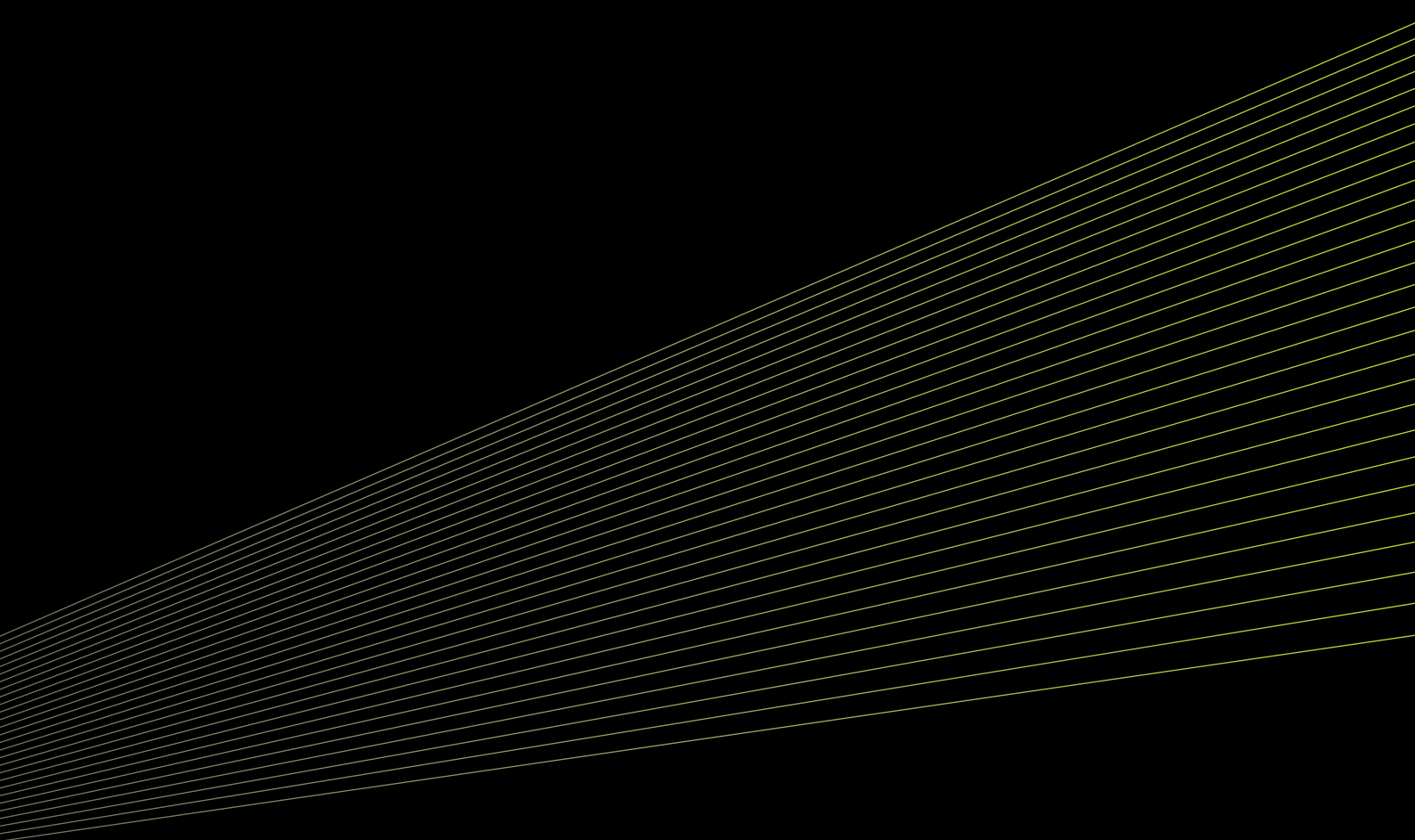


**ENLIT**

**SELECTION 2018**





TUNABLE  
\* WHITE \*

LED

#### GENERAL CHARACTERISTICS

- excellent lighting characteristics
- high light transmission of microprismatic diffuser
- homogeneously backlighted active part of the luminaire, without visible hot spots
- random orientation of luminaire in space - rotational symmetric light distribution curve with uniform emission of light to all directions
- suitable for workstations with monitors - luminance of light emitting area is in accordance with EN 12464-1: Light and lighting - lighting of indoor workplaces
- value UGR<19
- zero UV and IR emission
- zero mercury content
- lower thermal load to surrounding space in comparison with fluorescent equivalents (additional cost savings for air condition)
- enclosed optical system prevents dirt contamination - easy maintenance, constant photometric characteristics

#### VALUE FOR PRICE

- 1 113lm/W net system efficiency for BASIC LED OPAL – one of the most efficient luminaires on the market
- 2 homogeneously backlighted microprismatic/opal diffuser
- 3 state of the art LED technology used
- 4 2 types of optical systems available, 3 power versions available
- 5 glare prevention corresponding to EN standards for lighting of indoor workplaces for microprismatic diffuser
- 6 possible customization of dimensions
- 7 different colours of housing available on request
- 8 product fully manufactured and assembled in Slovakia

# BASIC LED

Replacement of fluorescents in the easiest way

## EXTRAORDINARY SYSTEM EFFICIENCY AND LOW POWER CONSUMPTION

Luminous flux is not only equal, but even higher than by fluorescent equivalents (4x18W resp. 4x14W). It means, less fixtures could be used to achieve the same lighting intensity in the room. All this by far lower consumption of electrical energy (consumption of the fixture is just 33W)

BASIC LED is a choice for people interested in most modern and up to date LED technology for acceptable price, who do not want to make compromises in lighting quality.

Lighting characteristics required from the high-class office luminaire are completely fulfilled and some parameters are even better than by fluorescent parents. All of it by far lower power consumption, additionally with substantially longer life of light sources.

## VERY HIGH QUALITY OF THE LIGHT

- with microprismatic diffuser, luminaire is suitable also for workstations with monitors: luminance of light emitting area is in accordance with EN 12464-1: Light and lighting – lighting of indoor workplaces.
- luminance of light emitting area do not exceed the value of 1500cd/m<sup>2</sup> in limit angle 65°, value UGR<19
- colour rendering index more than 80
- pleasant warm temperature, preferred in residential interiors, is also available (3000K)

## PRICE OF THE PRODUCT COULD BE INFLUENCED BY TYPE OF DIFFUSER

- not all applications are calling for supreme photometrical characteristics of microprismatic diffuser.
- for undemanding areas (e.g. corridors, public areas, industry) - standard opal diffuser is the cheapest available option.



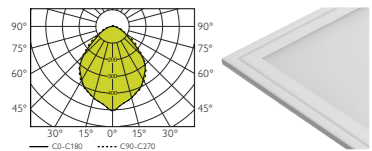
# BASIC LED

## RT600, RT625, R

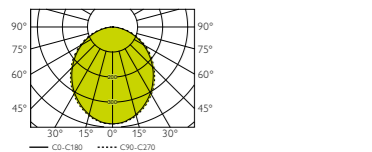


Recessed luminaire for ceilings with exposed grids, module size 600x600 or 625x625. Luminaire housing and frame made of 0,6mm sheet steel, white powder coated finish (RAL9003). Luminaire housing serve as passive heat sink for LED modules. Frame attached to the housing with 4 fast-mounting springs, tool free.

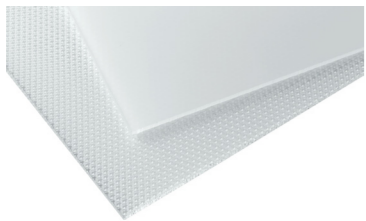
|                    |           |
|--------------------|-----------|
| Lamp               | LED       |
| Cooling            | PASSIVE   |
| Class              | I         |
| Ingress protection | IP40      |
| Weight             | 2-10,4 kg |



BASIC LED RT600 3750lm DMP



BASIC LED SUR 3750lm DO



### INSTALLATION TYPE

- RT600 – recessed luminaire, ceiling with exposed grids, module size 600x600
- RT625 – recessed luminaire, ceiling with exposed grids, module size 625x625
- R - recessed luminaire for different kind of the ceiling
- installation in to another ceiling types on request

### OPTICAL SYSTEM

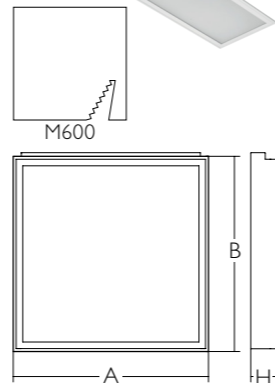
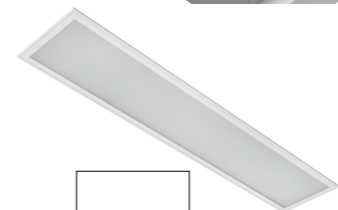
- DMP – microprismatic diffuser made of PMMA
- DO - opal diffuser made of PMMA

### ELECTRICAL EQUIPMENT

- 4xLED module fixed at the bottom of luminaire housing
- electronic LED driver
- terminal block with strain relief, max. 2,5mm<sup>2</sup>

### OPTIONAL EQUIPMENT

- wiring with emergency unit (1 or 3h)
- wiring with dimmable electronic control gear (DSI, DALI)
- various colour finishing
- fast connectors (Wieland, Wago, Isodom)



| Type*                        | System power (W) | Equivalent   | A (mm) | B (mm) | H (mm) | kg   |
|------------------------------|------------------|--------------|--------|--------|--------|------|
| BASIC LED RT600 1300lm       | 12               | 2x18W TC-DEL | 300    | 300    | 80     | 2    |
| BASIC LED RT600 3750lm       | 33               | 4x14W T5     | 595    | 595    | 80     | 5,2  |
| BASIC LED RT600 4500lm       | 40               | 3x24W T5     | 595    | 595    | 80     | 5,2  |
| BASIC LED RT600 5200lm       | 48               | 4x24W T5     | 595    | 595    | 80     | 5,2  |
| BASIC LED 6X3 RT600 3500lm   | 32               | 2x24W T5     | 595    | 295    | 80     | 2,7  |
| BASIC LED 12X3 RT600 3750lm  | 33               | 2x28W T5     | 1195   | 295    | 80     | 5,2  |
| BASIC LED 12X3 RT600 5200lm  | 48               | 2x54W T5     | 1195   | 295    | 80     | 5,2  |
| BASIC LED 12X6 RT600 7500lm  | 66               | 4x28W T5     | 1195   | 595    | 80     | 10,4 |
| BASIC LED 12X6 RT600 9000lm  | 80               | 3x54W T5     | 1195   | 595    | 80     | 10,4 |
| BASIC LED 12X6 RT600 10400lm | 96               | 4x54W T5     | 1195   | 595    | 80     | 10,4 |

\*net lumen output of the luminaire by 4000K  
SPECIFICATION

| CODE            | TYPE                        |
|-----------------|-----------------------------|
| BL00RT60LE01300 | BASIC LED RT600 1300lm      |
| BL00RT60LE03750 | BASIC LED RT600 3750lm      |
| BL00RT60LE04500 | BASIC LED RT600 4500lm      |
| BL00RT60LE05200 | BASIC LED RT600 5200lm      |
| BL20RT60LE03750 | BASIC LED 12x3 RT600 3750lm |
| BL20RT60LE05200 | BASIC LED 12x3 RT600 5200lm |
| BL40RT60LE07500 | BASIC LED 12x6 RT600 7500lm |
| BL40RT60LE09000 | BASIC LED 12x6 RT600 9000lm |

| cct                         | optics    | cri      | control gear                    | colour | accessories                      |
|-----------------------------|-----------|----------|---------------------------------|--------|----------------------------------|
| tunable white (3000K-6000K) | DMP<br>DO | 80<br>90 | ECG<br>DALI<br>DIM 1-10V<br>DSI |        | M 3h<br>M1h<br>Wieland<br>Isodom |

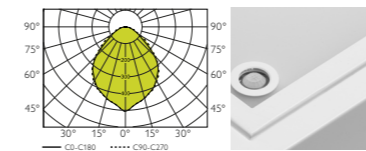
# BASIC LED

## range



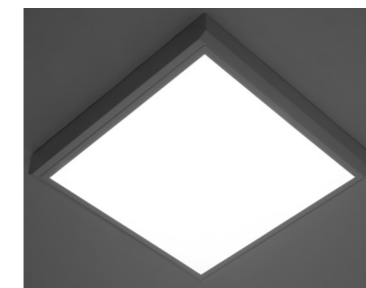
### BASIC LED SUR

|                    |             |
|--------------------|-------------|
| Lamp               | LED         |
| Cooling            | PASSIVE     |
| Class              | I           |
| Ingress protection | IP40        |
| Weight             | 5,8-11,2 kg |



BASIC LED SUR 3750lm DMP

DIMENSIONS:  
615x615mm  
1215x615mm



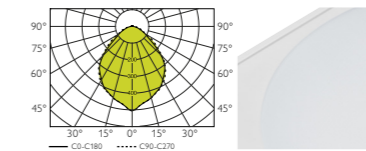
| Type*                      | System power (W) |
|----------------------------|------------------|
| BASIC LED SUR 3750lm       | 33               |
| BASIC LED SUR 4500lm       | 40               |
| BASIC LED SUR 5200lm       | 48               |
| BASIC LED 12X6 SUR 7500lm  | 66               |
| BASIC LED 12X6 SUR 9000lm  | 80               |
| BASIC LED 12X6 SUR 10400lm | 96               |

\*net lumen output of the luminaire by 4000K



### BASIC LED ROUND RT600

|                    |         |
|--------------------|---------|
| Lamp               | LED     |
| Cooling            | PASSIVE |
| Class              | I       |
| Ingress protection | IP40    |
| Weight             | 5,4 kg  |



BASIC LED ROUND RT600 3070lm

DIMENSIONS:  
595x595mm



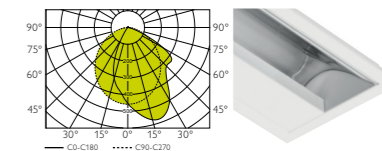
| Type*                  | System power (W) |
|------------------------|------------------|
| BASIC LED ROUND 3070lm | 32               |
| BASIC LED ROUND 2850lm | 33               |
| BASIC LED ROUND 3374lm | 40               |
| BASIC LED ROUND 3944lm | 48               |

\*net lumen output of the luminaire by 4000K



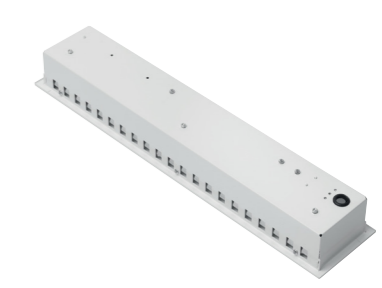
### BASIC LED ASYM RT600

|                    |            |
|--------------------|------------|
| Lamp               | LED        |
| Cooling            | PASSIVE    |
| Class              | I          |
| Ingress protection | IP40       |
| Weight             | 1,7-3,4 kg |



BASIC LED ASYM RT600 1600lm

DIMENSIONS:  
595x125mm  
1195x125mm



| Type*                      | System power (W) |
|----------------------------|------------------|
| BASIC LED ASYM 1600lm      | 22               |
| BASIC LED ASYM 12x1 2700lm | 34               |

\*net lumen output of the luminaire by 4000K

enlighten your world

ENLIT spol. s r. o.

Priemyselná 1497/18b  
905 01 Senica  
Slovakia

T +421 905 556 800  
T +421 915 089 654  
E [info@enlit.sk](mailto:info@enlit.sk)

[www.enlit.sk](http://www.enlit.sk)