



Company presentation/ Offered services

2013/08



enLighten your world

OFFERED SERVICES

Product development
Prototyping
Production technologies
Lighting solutions

make your world brighter

Many examples around us are showing, that there ´s not enough of right light. We are here for you. Let ´s look for right solutions and products in a way, that your world will become brighter..

make your world easier

We know, that good light helps. It positively influence the perception of surrounding space, make us feel better, provides better quality of working environment, higher performance and inner balance.

light up your world

We are ready to help at any time, to propose and realize your ideas, which will not only fulfill legislative requirements, but will bring you a pleasure, comfort and a better life.



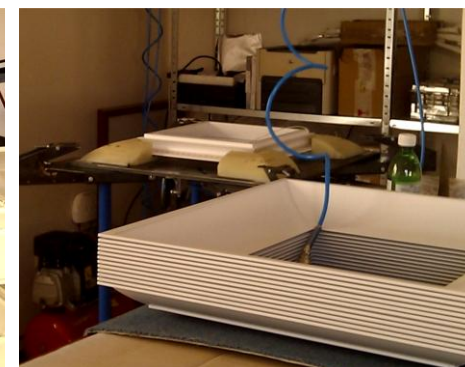
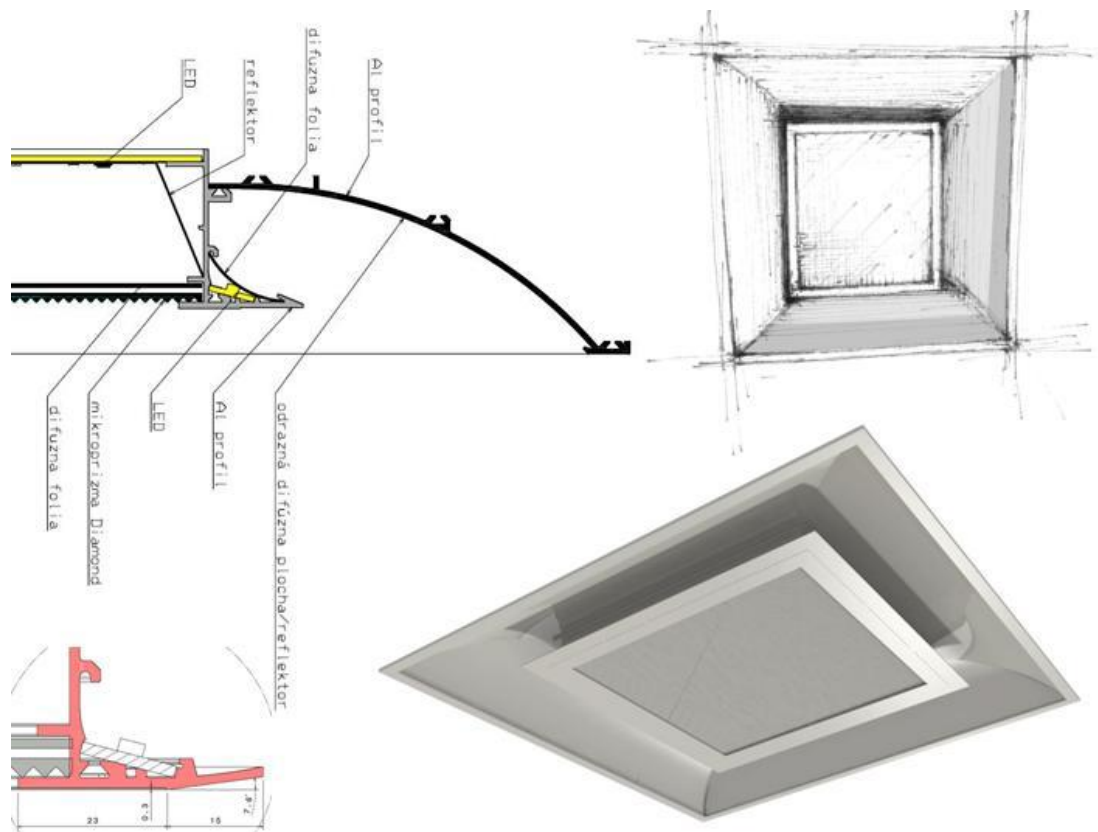
Product development

Design > Prototyping

Design

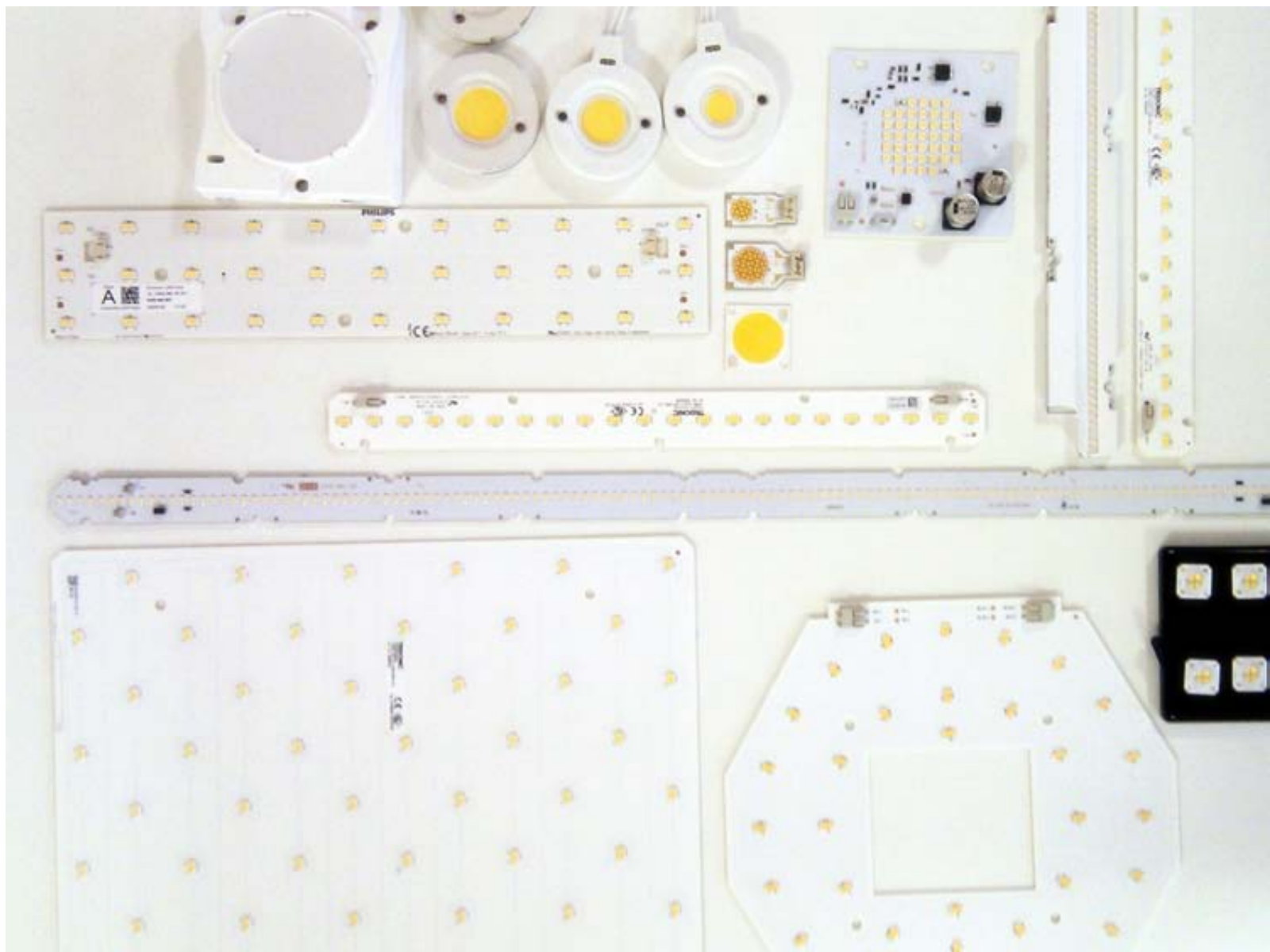
Our long-term experiences from the field of lighting technology in combination with creativity of product designers and knowledge of constructors from ENLIT team could help you in a short time to extend your product portfolio.

We design the product not only in compliance with your product design line, but also with adaptation of necessary parameters and product functionality for desired area of application. We take into consideration fulfillment of all normative requirements and needs of production process.



Design

We are in close touch with world renowned producers of lamps and control gears – this guarantee for us the regular access to the newest technologies, like LED modules, possibility of their testing and finding the best way how to use them.



Prototyping

It is convenient to verify proposed solution with functional prototypes. Measurements or functional test will unmask potential faults before launching of serial production. By production of prototypes, materials planned for a serial production are utilized in maximum possible rate.





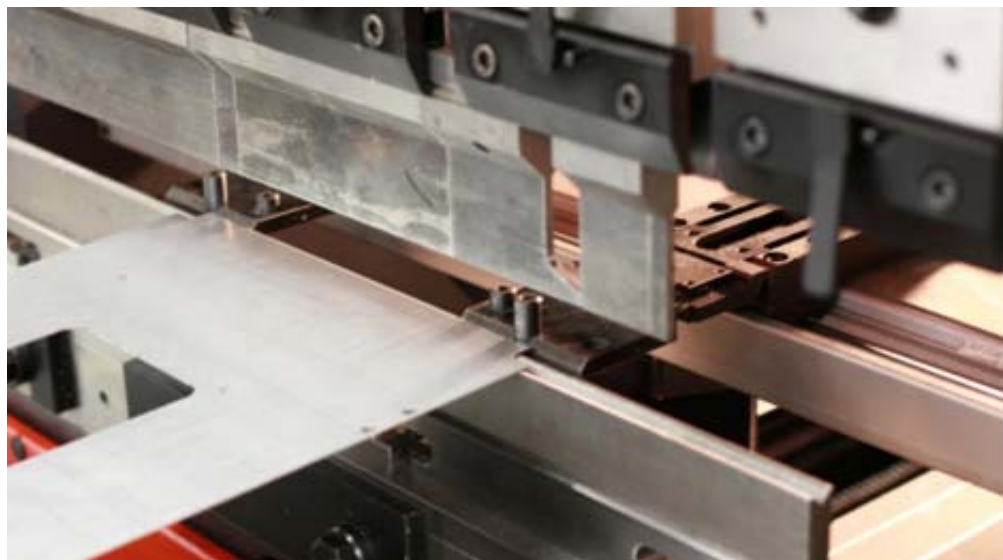
Production technologies

Production of components

We dispose of modern technologies necessary for production of luminaire components, also with workstations for final assembling.



Production of components



Production of components





Lighting solutions

Enter information > Design and calculation > Realization

INDEX

Usually there are more ways to reach a solution. We will provide you their description, point out their weaknesses and strengths, show you computer visualisations - everything for your right choice. Except of our own portfolio we are also offering carefully selected exceptional products of our partners, that complement our product range. Thanks to this, we are ready to provide complex lighting solutions for your space from A to Z: administrative, retail and industrial areas, workplaces, schools, hotels or medical institutions.

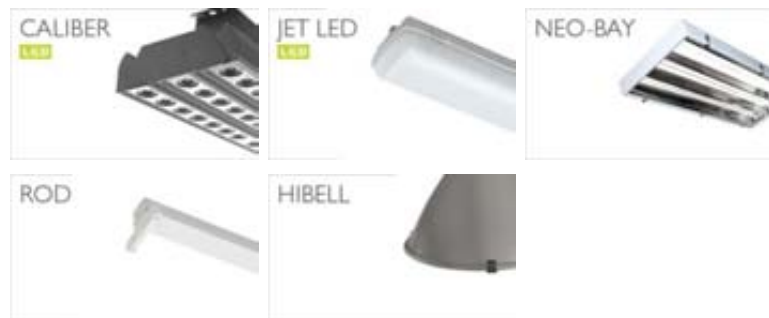
Recessed, surface mounted, suspended



Accent luminaire



High-bay, low-bay, batten



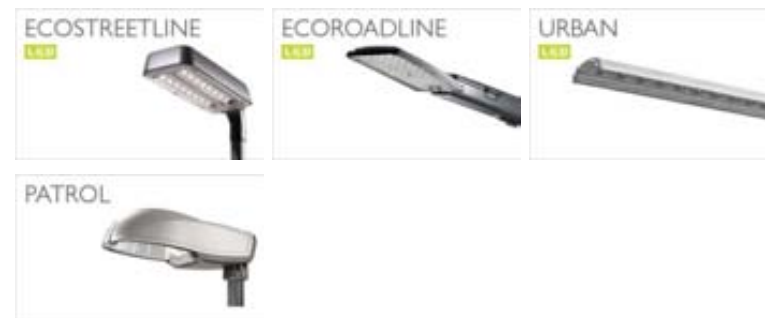
Downlights



Continuous row system



Street luminaires

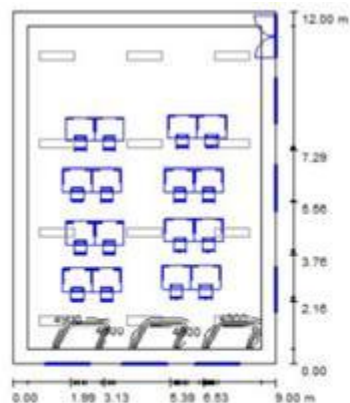


Lighting project

Lighting design should start from architect's proposal and in accordance with technical possibilities, should fulfil both functional and aesthetic role.

Lighting design and calculation itself are carried out according to valid standards

The output is completely worked-out documentation. For better imagination about lighting conditions in considered space, we offer 3D visualization or demonstrative video.



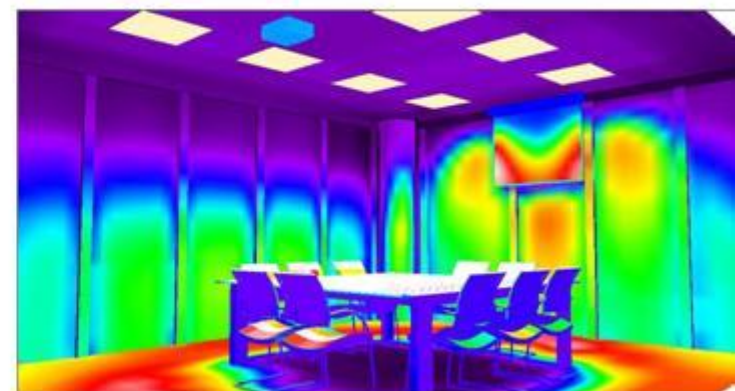
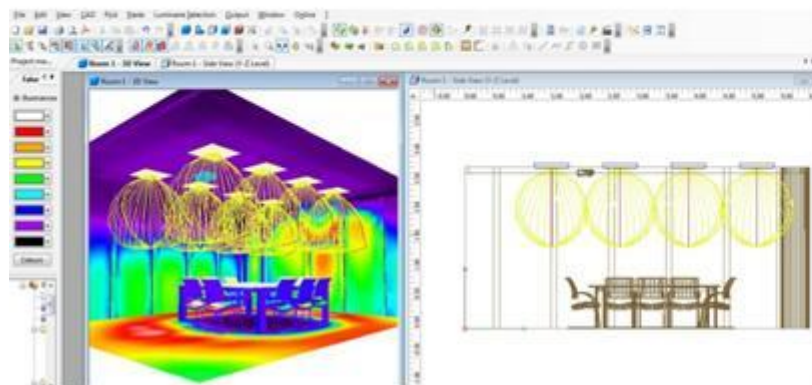
Výška místnosti: 3.300 m, Montážní výška: 3.000 m, Číselník údržby: 0.80 Hodnoty v Lx, Měřítko 1:155

Plocha	ρ [%]	E_m [lx]	E_{min} [lx]	E_{max} [lx]	E_{min} / E_m
Uživatelská úroveň	/	1704	164	24403	0.096
Podlaha	52	1745	95	23196	0.054
Strop	70	604	116	1709	0.193
Stěny (4)	56	687	128	4918	/

Uživatelská úroveň:

Výška: 0.750 m
 Rastr: 128 x 128 Bod
 Okrajová šířka: 0.500 m
 Poměr intenzit osvětlení (podle LG7): Stěny / pracovní rovina: 0.353, Strop / pracovní rovina: 0.354.

Čistá scéna denního světla, bez stínů.



Lighting project

- Energy audit
- Requirements for visual activity
- Classification of environment
- Requirements for illumination according to the standard EN 12 464-1
- Proposal of luminaires and light sources
- Luminaire arrangement
- Lighting calculation
- Calculation of emergency lighting
- False colour rendering
- Visualization of proposed solution
- Energy balance
- Calculation of payback time for new lighting installation

Návrh osvetlenia

ENLIT spol. s r.o.
28. mája 2014
800 12, Senica
www.enlit.sk

Zákazník: MATO BARR
Tel: +421 905 838 832
Fax: +421 34 824 23 89
e-mail: matbarr@enlit.sk

Hala KOVOBEL a.s., Senica / Sírntuň

Výška miestnosti: 11,300 m, Účel: údržba

Plocha	u [%]	E _{av} [lx]	E _{min} [lx]	E _{max} [lx]	E _{av} / E _{min}
Užívateľská úroveň	200	1,87	358	0,009	
Podlaha	20	1,93	349	0,010	
Stropy (I1)	50	32	0,06	54	
Stĺpy (S)	45	52	0,52	241	

Užívateľská úroveň:
Výška: 0,750 m
Rozsah: 128 x 128 Body
Okrasová zóna: 0,500 m

Návrh osvetlenia

ENLIT spol. s r.o.
28. mája 2014
800 12, Senica
www.enlit.sk

Zákazník: MATO BARR
Tel: +421 905 838 832
Fax: +421 34 824 23 89
e-mail: matbarr@enlit.sk

Hala KOVOBEL a.s., Senica / Výpočtové plochy (přehled výsledků)

izkazem výpočtových ploch

Číslo	Opis	Typ	Rozsah	E _{av} [lx]	E _{min} [lx]	E _{max} [lx]	E _{av} / E _{min}	E _{av} / E _{max}
1	Výpočtová plocha, hala 1	svetlo	16 x 32	240	158	290	0,889	0,548
2	Výpočtová plocha, hala 2	svetlo	16 x 84	235	174	308	0,740	0,564
3	Výpočtová plocha, hala 2 - sklad	svetlo	16 x 128	216	155	307	0,720	0,506

Návrh osvetlenia

ENLIT spol. s r.o.
28. mája 2014
800 12, Senica
www.enlit.sk

Zákazník: MATO BARR
Tel: +421 905 838 832
Fax: +421 34 824 23 89
e-mail: matbarr@enlit.sk

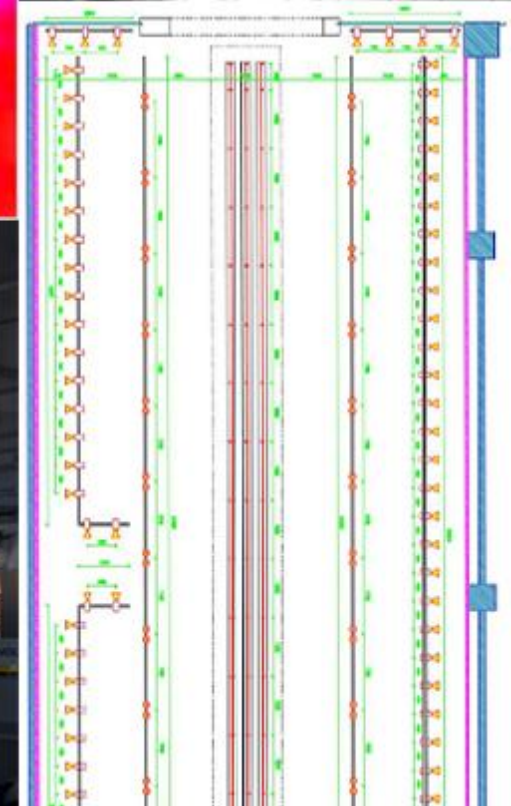
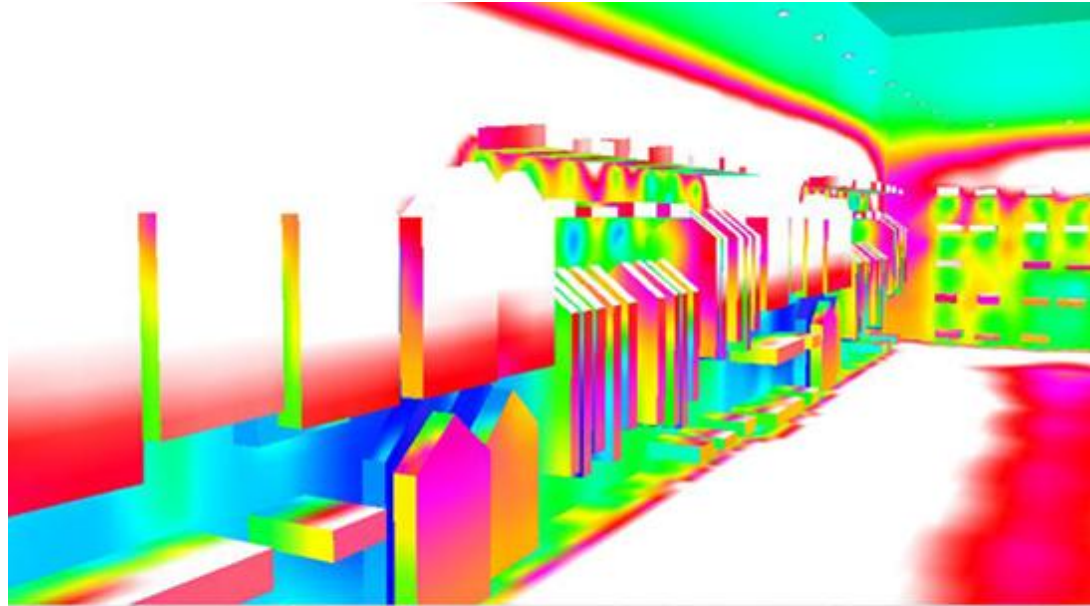
Hala KOVOBEL a.s., Senica / Užívateľská úroveň / Stupňe šedi (E)

Plocha plochy v m²:
Právnosť roviny: 0,500 m (Okrasová zóna)
Okrasovaný štít: 0,500 m, 0,500 m, 0,750 m

Hala KOVOBEL a.s., Senica / Renderovanie

Opis	0,5	0,5	0,5	šed'
čas potrebný na výmenu svetelného zdroja	0,5	0,5	0,5	šed'
cesta za skladenie + naprogramovanie svetiel	0,00	0,00	1 500,00	€
cesta novej inštalácie (montáž, káble, rozvádzače...)	0,00	0,00	0,00	€
typ svetidla	pôvodné, výbojkové 400W	nové, žiarivkové 4x49W	nové, žiarivkové 4x49W + regulácia	
celkové vstupné náklady	1 175,00	16 992,00	20 292,00	€
počet výmen svetelných zdrojov za 12 rokov	8	2	2	
náklady na jednu výmenu svetelných zdrojov (súčet)	1 527,50	1 692,00	1 692,00	€
príkon svetidla	450,00	208,00	208,00	W
príkon celej sústavy	21 150,00	14 976,00	14 976,00	W
spotreba el. energie za deň	421,00	299,52	251,60	kWh
mesiac	9 190,18	6 567,43	5 466,24	kWh
rok	110 282,34	78 089,14	65 594,88	kWh
produkcia CO2 za rok	70 580,57	49 977,05	41 980,72	kg
cesta za spotrebovanú energiu za deň	83,45	44,93	37,74	€
mesiac	1 878,53	976,11	819,94	€
rok	16 542,32	11 713,37	9 839,23	€
rozdiel vstupných nákladov		15 817,00	19 117,00	€
úspora v nákladoch na energiu za rok		-4 828,95	-4 703,09	€
úspora CO2 za rok		-20 603,52	-28 599,85	kg
obdobnosť vrátenia nákladov na súčet		3,1	2,9	rokov

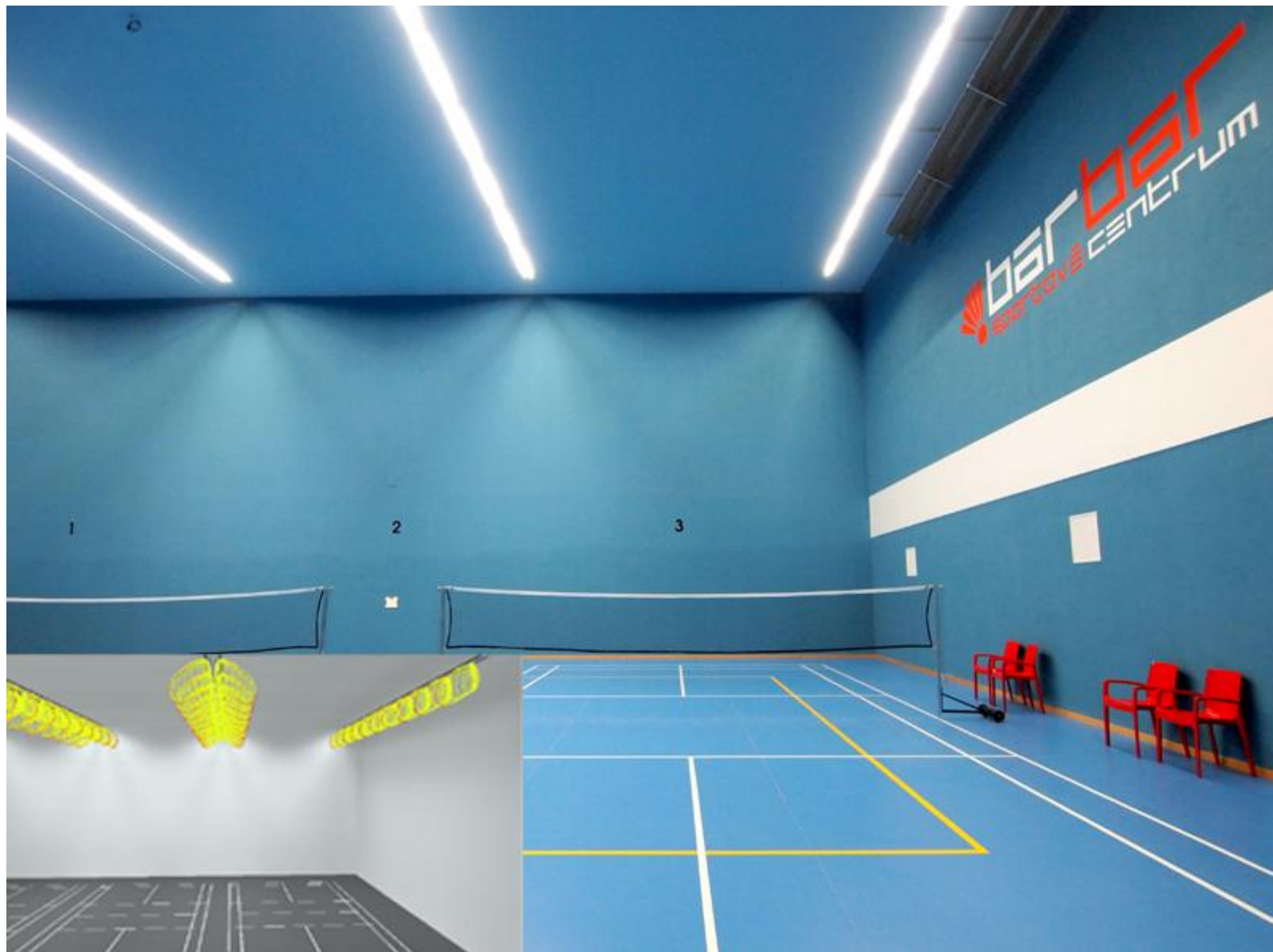
Lighting project



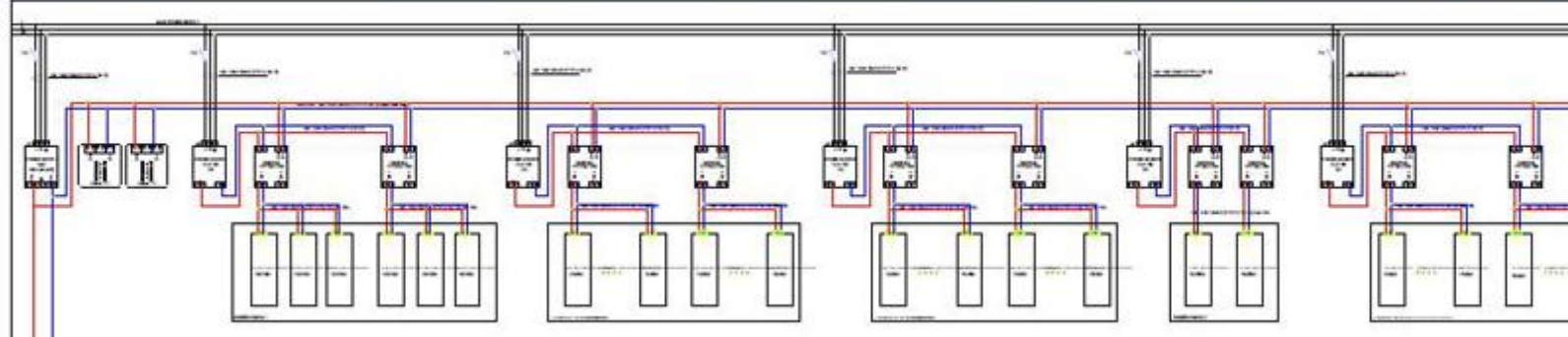
Lighting project



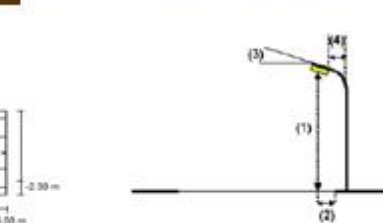
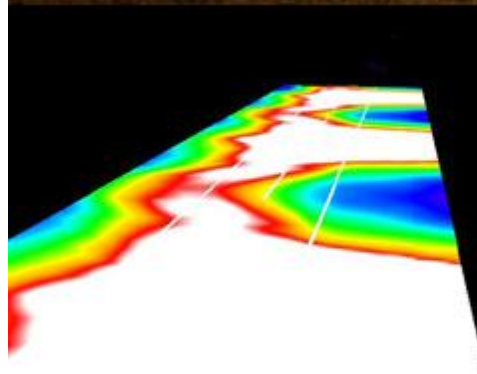
Lighting project



Lighting project



Lighting project



Svítlidlo:	ENLIT spol. s r.o. Avantgarde 70W HS
Svítečný tok (Svítlidlo):	5096 lm
Svítečný tok (Zdroje):	6500 lm
Výkon svítlidla:	70.0 W
Umístění:	jednostranně dole
Vzdálenost sloupů:	34.000 m
Montážní výška (1):	7.000 m
Výška svítečného bodu:	6.807 m
Přesah (2):	-2.248 m
Sklon ramene (3):	15.0 °
	Nevyšší hodnoty intenzity světla u 70°: 666 cd/km
	u 80°: 374 cd/km
	u 90°: 41 cd/km
	Vševyšší hodnoty intenzity světla jsou v souladu s normou EN 12464-2.
	Uspořádání splňuje třídu indexu osvětlení D 4.



Thank you for your attention.